

VIBRACORE LOG							
PROJECT: LIDO KEY SAND SEARCH BORROW AREA 4 CORE NO: LKVC - 13							
COORINATES: N = 1086291 E = 271661		DATE: JAN. 27, 1995 START TIME: 0928 END TIME: 0936		WATER DEPTH: 32.0 Ft. NGVD DRILLER: EXMAR CLIENT REP : M. D. ANDREWS			
CORE DIAMETER: 2.5"	ELEV.	DEPTH	LEGEND	DESCRIPTION	SAMP NO.	REMARKS	
LENGTH OF BARREL: 12.0'	32.0'	0.0					
PENETRATION DEPTH: 5.0'			~				
LENGTH RECOVERED: 4.3'			~				
LENGTH RETAINED : 4.2'			~	GRAY (N6), FINE / MEDIUM GRAINED SAND WITH CALCAROUS SHELL HASH	1 1.0' 33.0	0.88 Phi 0.54 mm 2.5 % SILT (SP)	
SUPPORT VESSEL: EXMAR II							
POSITIONING: DGPS MOTOROLA LGT 1000 / USCG BEACON		34.5'	2.5	~			
WEATHER:							
WIND:							
DIR: NE SPEED: 5 - 10 Kt							
WAVES:		36.2'	4.2		LIGHT GREENISH GRAY (10Y 7/1) FINE / MEDIUM GRAINED SAND	2 4.0' 36.0	2.36 Phi 0.20 mm 8.7 % SILT (SP - SM)
DIR: EAST HEIGHT: 0 - 1 Ft.				NOT RECOVERED			
CURRENT:		37.0'	5.0	X X X X X	ROCK		
DIR: SOUTH SPEED: LIGHT							
ANALYSIS BY: MDA							
ANALYSIS METHOD: VISUAL LOGGING MECHANICAL SIEVE			7.5				
SAND							
SHELLS							
ROCK FRAG.							
SHELL HASH							
ROCK			10.0				

NOTE: MEAN WAS CALCULATED USING MOMENT METHOD
NOTE: COORDINATE SYSTEM - FLORIDA STATE PLANE NAD 1927
NOTE : CORE WEIGHTED COMPOSITE 0.36 mm

COASTAL PLANNING & ENGINEERING, INC

GRADATION ANALYSIS REPORT
LIDO KEY VIBRACORE JAN. 1995
TESTED BY: MDA ON: 03-02-95

SAMPLE NO.: LKVC-13 S1
SAMPLE ELEV. (FT. NGVD): -33.0
SAMPLE DEPTH (FT.): -1.0
SAMPLE TYPE: CORE SAMPLE

USCS DESCRIPTION: SP

DRY SAMPLE WEIGHT (GRAMS): 59.09
SAMPLE WEIGHT AFTER WASH (GRAMS): 57.63

SIEVE SIZE	PHI SIZE	MESH SIZE (mm)	RETAINED (GRAMS)	RETAINED (%)	PASSED (%)
5/8	-4.0	16.000	.00	.00	100.00
5/16	-3.0	8.000	.00	.00	100.00
5	-2.0	4.000	.19	.32	99.68
7	-1.5	2.800	.52	.88	99.12
10	-1.0	2.000	1.38	2.34	97.66
14	-0.5	1.400	3.61	6.11	93.89
18	0.0	1.000	8.08	13.67	86.33
25	0.5	.710	19.63	33.22	66.78
35	1.0	.500	35.24	59.64	40.36
45	1.5	.355	44.57	75.43	24.57
60	2.0	.250	52.13	88.22	11.78
80	2.5	.180	54.77	92.69	7.31
120	3.0	.125	56.87	96.24	3.76
170	3.5	.090	57.54	97.38	2.62
200	3.75	.075	57.59	97.46	2.54
230	4.0	.063	58.33	98.71	1.29
PAN			59.06	99.95	.05

PHI(5): -.65 PHI(16): .06 PHI(25): .29
PHI(50): .82 PHI(75): 1.49 PHI(84): 1.84
PHI(95): 2.83

SIEVE LOSS(g): .03 SILT/CLAY: 2.54%
SKEWNESS: .543 KURTOSIS: 1.189

GRAPHIC METHOD

MEAN (PHI): .98 SORTING: .89
MEAN (mm): .51 MEDIAN (mm): .57
NOTE: MEAN WAS CALCULATED USING 5 POINT METHOD

MOMENT METHOD

MEAN (PHI): .88 SORTING: .97
MEAN (mm): .54

DATA FILE NAME: LKVC13S1.TAB

GRADATION ANALYSIS REPORT
LIDO KEY VIBRACORE JAN. 1995
TESTED BY: MDA ON: 03-02-95

SAMPLE NO.: LKVC-13 S2
SAMPLE ELEV. (FT. NGVD): -36.0
SAMPLE DEPTH (FT.): -4.0
SAMPLE TYPE: CORE SAMPLE

USCS DESCRIPTION: SP-SM

DRY SAMPLE WEIGHT (GRAMS): 52.57
SAMPLE WEIGHT AFTER WASH (GRAMS): 48.32

SIEVE SIZE	PHI SIZE	MESH SIZE (mm)	RETAINED (GRAMS)	RETAINED (%)	PASSED (%)
5/8	-4.0	16.000	.00	.00	100.00
5/16	-3.0	8.000	.00	.00	100.00
5	-2.0	4.000	.13	.25	99.75
7	-1.5	2.800	.22	.42	99.58
10	-1.0	2.000	.50	.95	99.05
14	-0.5	1.400	.86	1.64	98.36
18	0.0	1.000	1.39	2.64	97.36
25	0.5	.710	2.81	5.35	94.65
35	1.0	.500	5.87	11.17	88.83
45	1.5	.355	9.10	17.31	82.69
60	2.0	.250	14.44	27.47	72.53
80	2.5	.180	20.53	39.05	60.95
120	3.0	.125	37.93	72.15	27.85
170	3.5	.090	46.64	88.72	11.28
200	3.75	.075	48.02	91.34	8.66
230	4.0	.063	50.35	95.77	4.23
PAN			52.49	99.85	.15

PHI(5): .44 PHI(16): 1.39 PHI(25): 1.88
PHI(50): 2.67 PHI(75): 3.09 PHI(84): 3.36
PHI(95): 3.96

SIEVE LOSS(g): .08 SILT/CLAY: 8.66%
SKEWNESS: -.938 KURTOSIS: 1.195

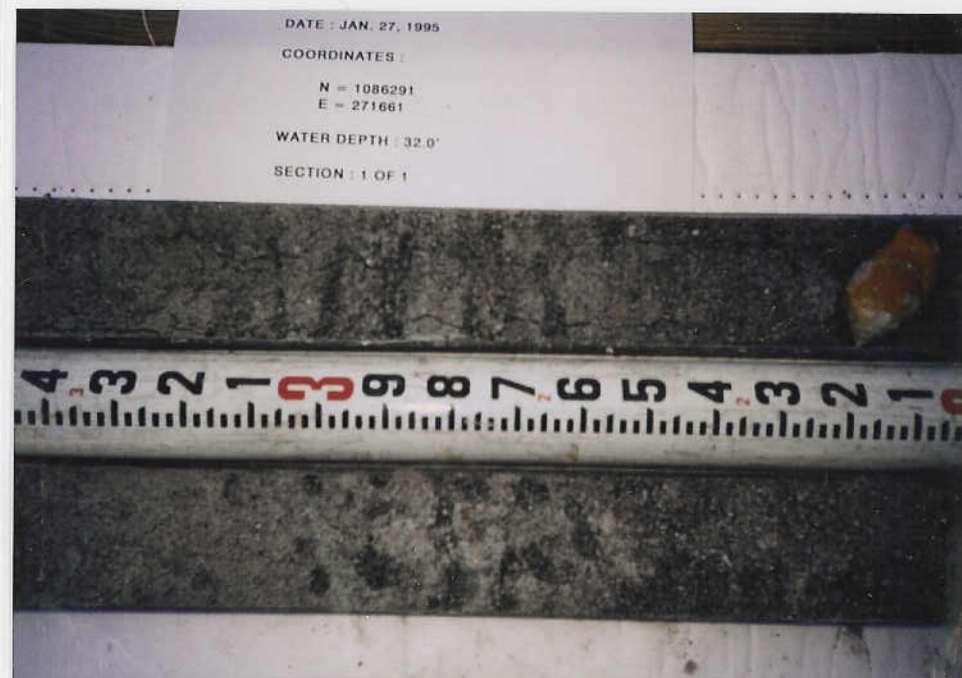
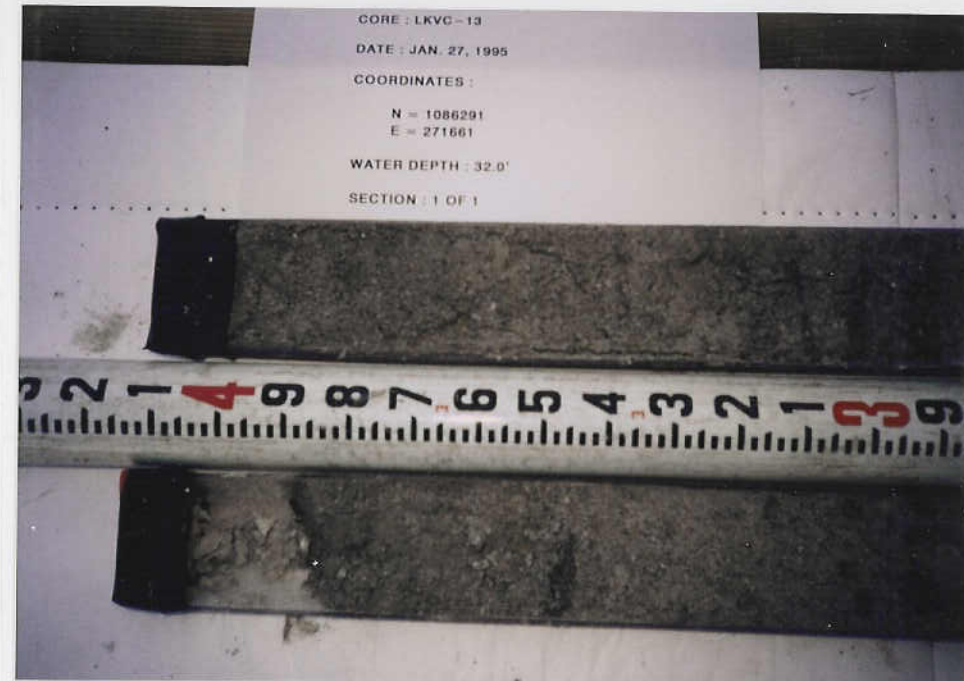
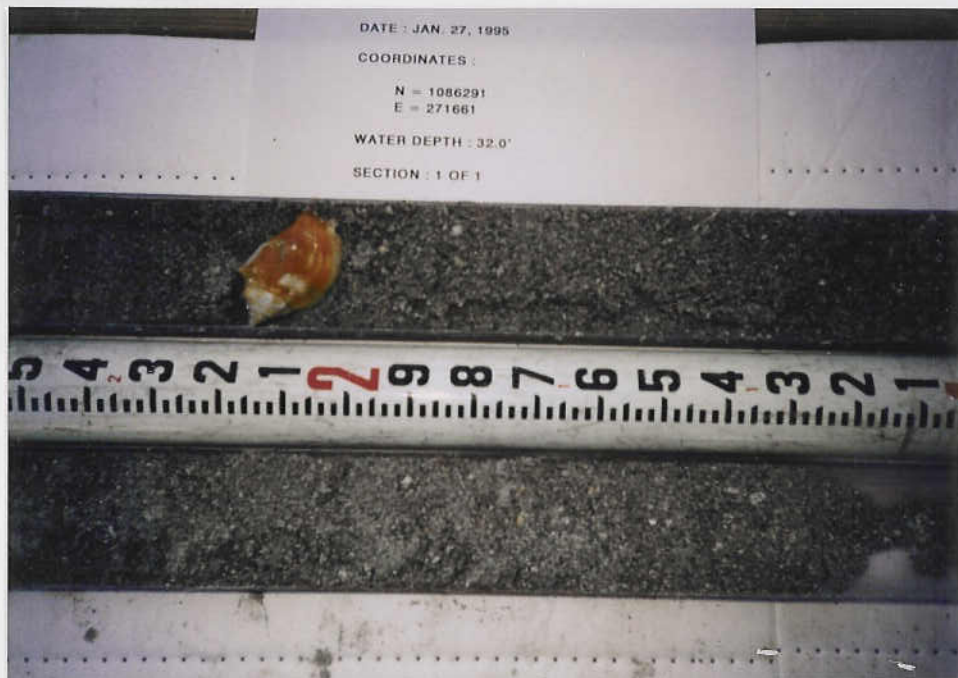
GRAPHIC METHOD

MEAN (PHI): 2.36 SORTING: .98
MEAN (mm): .19 MEDIAN (mm): .16
NOTE: MEAN WAS CALCULATED USING 5 POINT METHOD

MOMENT METHOD

MEAN (PHI): 2.36 SORTING: 1.02
MEAN (mm): .20

DATA FILE NAME: LKVC13S2.TAB



LKVC-13