

VIBRACORE LOG						
PROJECT: LIDO KEY SAND SEARCH BORROW AREA 4 CORE NO: LKVC - 13A						
<u>COORDINATES:</u>	<u>DATE:</u> JAN. 27, 1995		<u>WATER DEPTH:</u> 31.8 Ft. NGVD			
N = 1086201	<u>START TIME:</u> 1027		<u>DRIller:</u> EXMAR			
E = 271692	<u>END TIME:</u> 1030		<u>CLIENT REP :</u> M. D. ANDREWS			
CORE DIAMETER: 2.5"	ELEV.	DEPTH	LEGEND	DESCRIPTION	SAMP NO.	REMARKS
LENGTH OF BARREL: 12.0'	31.8'	0.0				
PENETRATION DEPTH: 5.5'			~ ~			
LENGTH RECOVERED: 4.5'			~ ~			
LENGTH RETAINED : 4.5'			~ ~			
SUPPORT VESSEL: EXMAR II			~ ~	GRAY (NS), FINE / MEDIUM GRAINED SAND WITH CALCAREOUS SHELL HASH	1 1.0' 32.8	1.36 Phi 0.39 mm 2.4 % SILT (SP)
POSITIONING: DGPS MOTOROLA LGT 1000 / USCG BEACON		2.5	~ ~			
<u>WEATHER:</u>			~ ~			
<u>WIND:</u> DIR : NE SPEED : 5 - 10 Kt	35.1'	3.3	~ ~	LT GREENISH GRAY (10Y 7/1) FINE / MEDIUM GRAINED SAND	2 4.0' 35.8	2.74 Phi 0.15 mm 9.4 % SILT (SP - SM)
<u>WAVES:</u> DIR : EAST HEIGHT: 0-1 Ft.	36.3'	4.5				
<u>CURRENT:</u> DIR : SOUTH SPEED : LIGHT		5.0	NOT RECOVERED			
	37.3'	5.5	X X X X X	ROCK		
ANALYSIS BY : MDA						
<u>ANALYSIS METHOD:</u> VISUAL LOGGING MECHANICAL SIEVE		7.5				
SAND						
SHELLS						
ROCK FRAG.						
SHELL HASH						
ROCK		10.0				

NOTE : CORE WEIGHTED COMPOSITE 0.30 mm

COASTAL PLANNING & ENGINEERING, INC

GRADATION ANALYSIS REPORT
LIDO KEY VIBRACORE JAN. 1995
TESTED BY: MDA ON: 03-02-95

SAMPLE NO.: LKVC-13A S1
SAMPLE ELEV. (FT. NGVD): -32.8
SAMPLE DEPTH (FT.): -1.0
SAMPLE TYPE: CORE SAMPLE

USCS DESCRIPTION: SP

DRY SAMPLE WEIGHT (GRAMS): 72.60
SAMPLE WEIGHT AFTER WASH (GRAMS): 70.91

SIEVE SIZE	PHI SIZE	MESH SIZE (mm)	RETAINED (GRAMS)	RETAINED (%)	PASSED (%)
5/8	-4.0	16.000	.00	.00	100.00
5/16	-3.0	8.000	.00	.00	100.00
5	-2.0	4.000	.29	.40	99.60
7	-1.5	2.800	.40	.55	99.45
10	-1.0	2.000	.81	1.12	98.88
14	-0.5	1.400	1.46	2.01	97.99
18	0.0	1.000	3.13	4.31	95.69
25	0.5	.710	9.53	13.13	86.87
35	1.0	.500	25.30	34.85	65.15
45	1.5	.355	40.59	55.91	44.09
60	2.0	.250	56.95	78.44	21.56
80	2.5	.180	64.17	88.39	11.61
120	3.0	.125	69.51	95.74	4.26
170	3.5	.090	70.77	97.48	2.52
200	3.75	.075	70.85	97.59	2.41
230	4.0	.063	71.71	98.78	1.22
PAN			72.56	99.94	.06

PHI(5): .04 PHI(16): .57 PHI(25): .77
PHI(50): 1.36 PHI(75): 1.92 PHI(84): 2.28
PHI(95): 2.95

SIEVE LOSS(g): .04 SILT/CLAY: 2.41%
SKEWNESS: .269 KURTOSIS: 1.037

GRAPHIC METHOD

MEAN (PHI): 1.44 SORTING: .86
MEAN (mm): .37 MEDIAN (mm): .39

NOTE: MEAN WAS CALCULATED USING 5 POINT METHOD

MOMENT METHOD

MEAN (PHI): 1.36 SORTING: .90
MEAN (mm): .39

DATA FILE NAME: LVC13AS1.TAB

GRADATION ANALYSIS REPORT
LIDO KEY VIBRACORE JAN. 1995
TESTED BY: MDA ON: 03-02-95

SAMPLE NO.: LKVC-13A S2
SAMPLE ELEV. (FT. NGVD): -35.8
SAMPLE DEPTH (FT.): -4.0
SAMPLE TYPE: CORE SAMPLE

USCS DESCRIPTION: SP-SM

DRY SAMPLE WEIGHT (GRAMS): 59.51
SAMPLE WEIGHT AFTER WASH (GRAMS): 54.28

SIEVE SIZE	PHI SIZE	MESH SIZE (mm)	RETAINED (GRAMS)	RETAINED (%)	PASSED (%)
5/8	-4.0	16.000	.00	.00	100.00
5/16	-3.0	8.000	.00	.00	100.00
5	-2.0	4.000	.00	.00	100.00
7	-1.5	2.800	.23	.39	99.61
10	-1.0	2.000	.45	.76	99.24
14	-0.5	1.400	.66	1.11	98.89
18	0.0	1.000	.96	1.61	98.39
25	0.5	.710	1.57	2.64	97.36
35	1.0	.500	2.75	4.62	95.38
45	1.5	.355	4.10	6.89	93.11
60	2.0	.250	6.78	11.39	88.61
80	2.5	.180	11.72	19.69	80.31
120	3.0	.125	34.71	58.33	41.67
170	3.5	.090	51.21	86.05	13.95
200	3.75	.075	53.90	90.57	9.43
230	4.0	.063	56.83	95.50	4.50
PAN			59.47	99.93	.07

PHI(5): 1.08	PHI(16): 2.28	PHI(25): 2.57
PHI(50): 2.89	PHI(75): 3.30	PHI(84): 3.46
PHI(95): 3.97		

SIEVE LOSS(g): .04	SILT/CLAY: 9.43%
SKEWNESS: -.727	KURTOSIS: 1.619

GRAPHIC METHOD

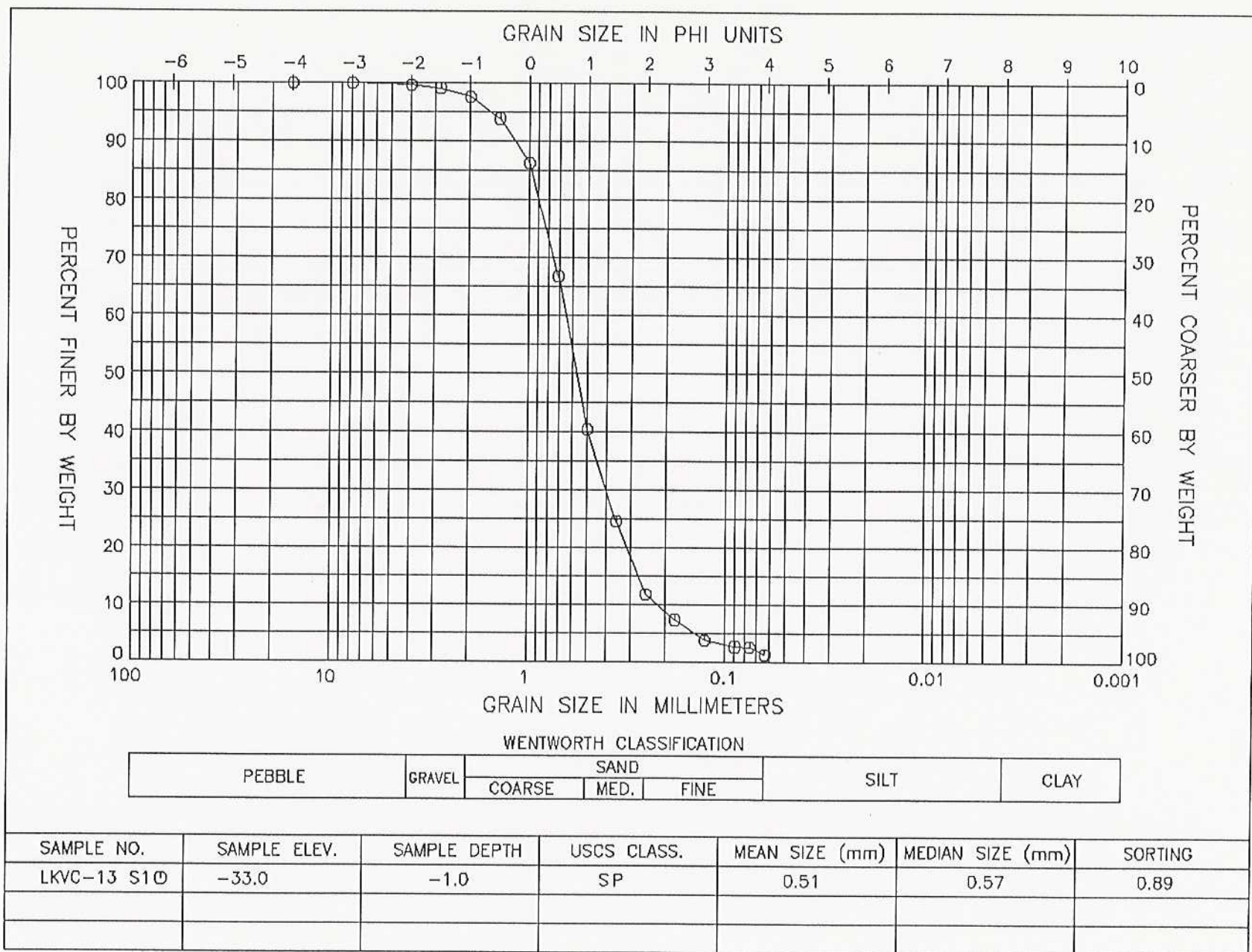
MEAN (PHI): 2.74	SORTING: .59
MEAN (mm) : .15	MEDIAN (mm): .13
NOTE: MEAN WAS CALCULATED USING 5 POINT METHOD	

MOMENT METHOD

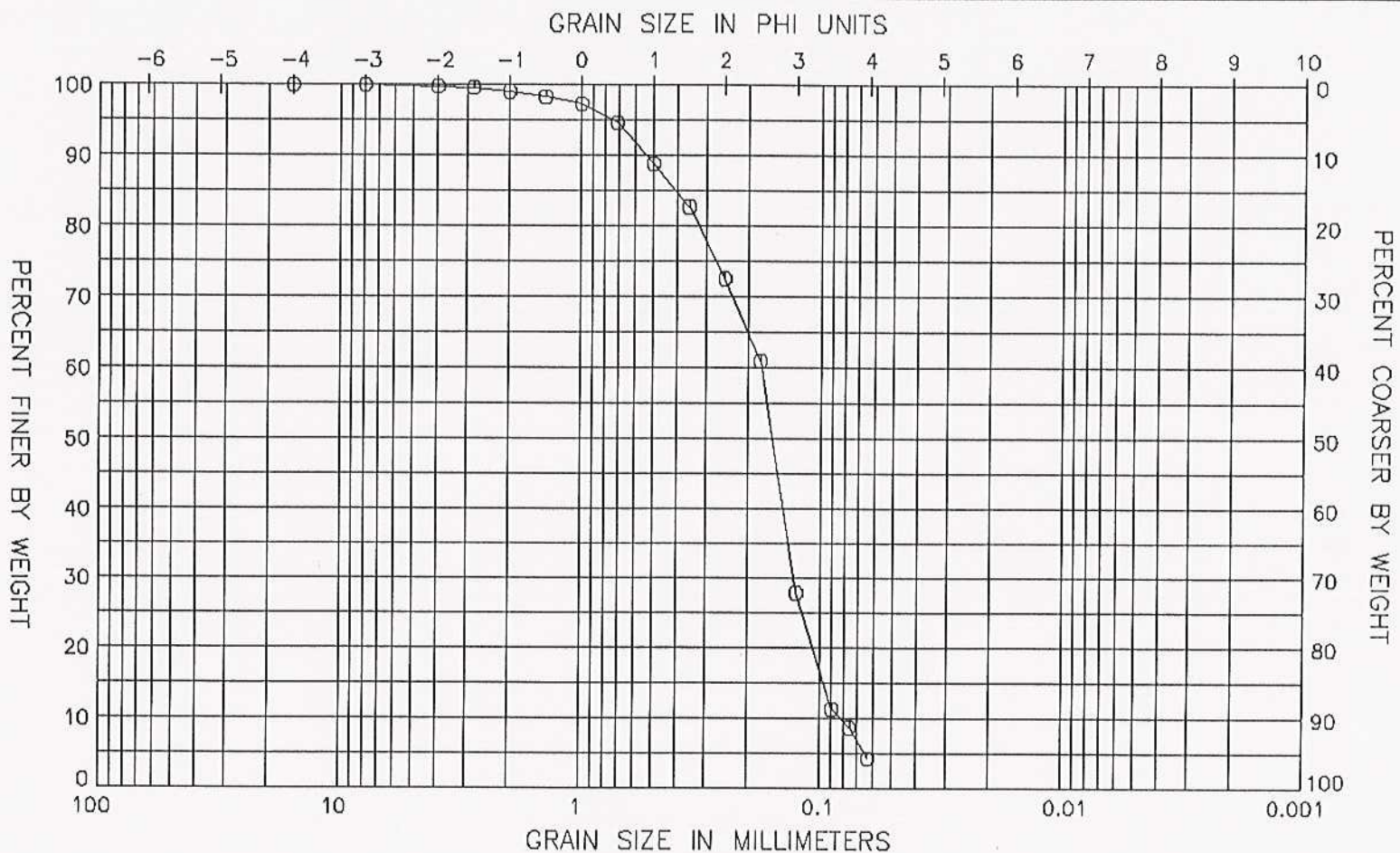
MEAN (PHI): 2.74	SORTING: .83
MEAN (mm) : .15	

DATA FILE NAME: LVC13AS2.TAB

GRAIN SIZE DISTRIBUTION CURVE
LIDO KEY VIBRACORE JAN. 1995



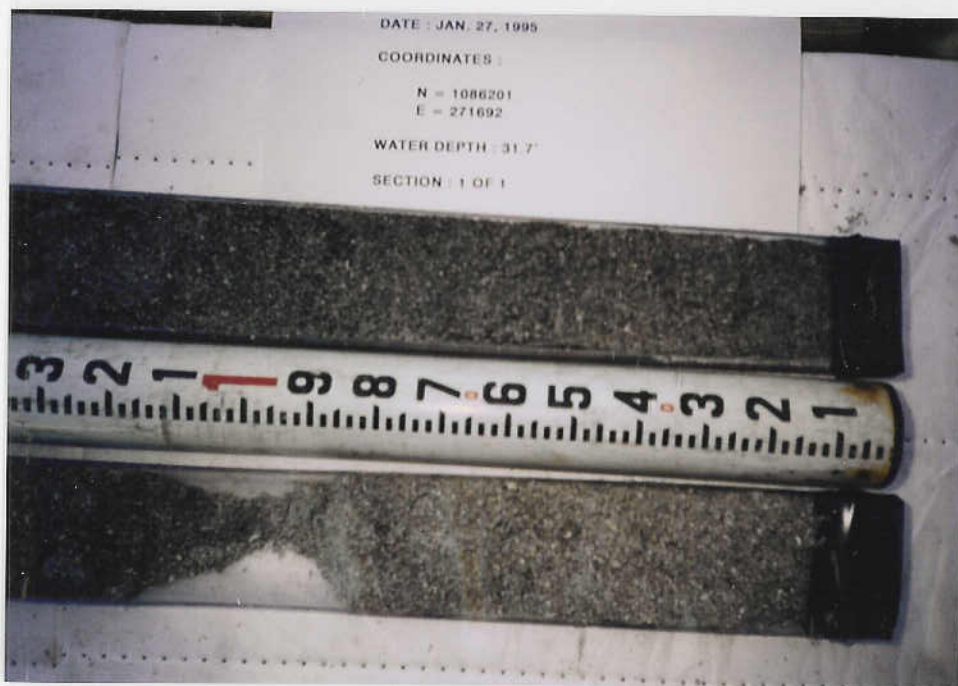
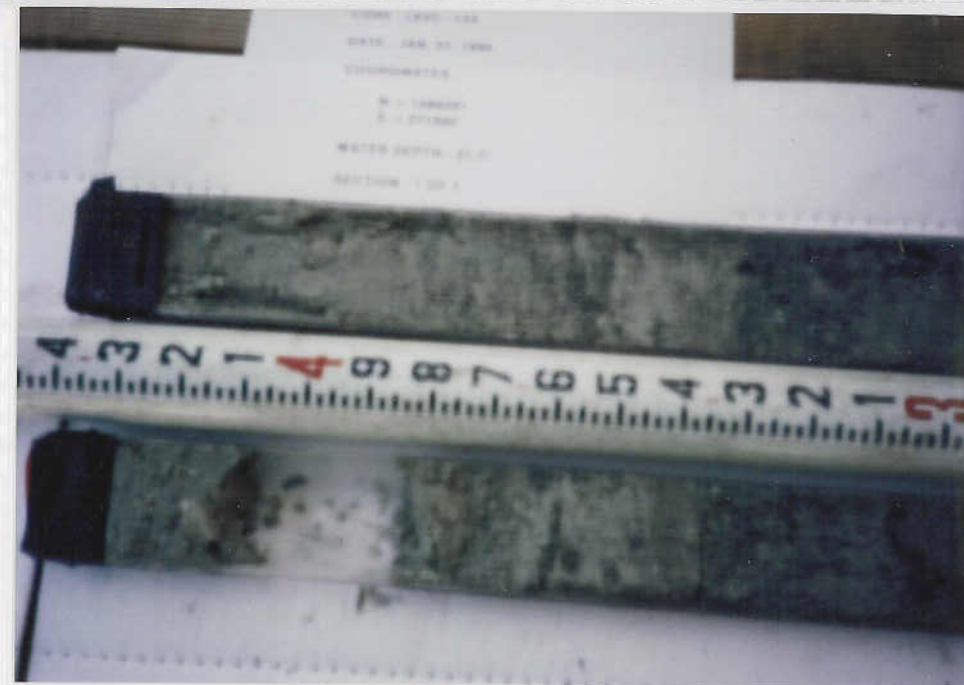
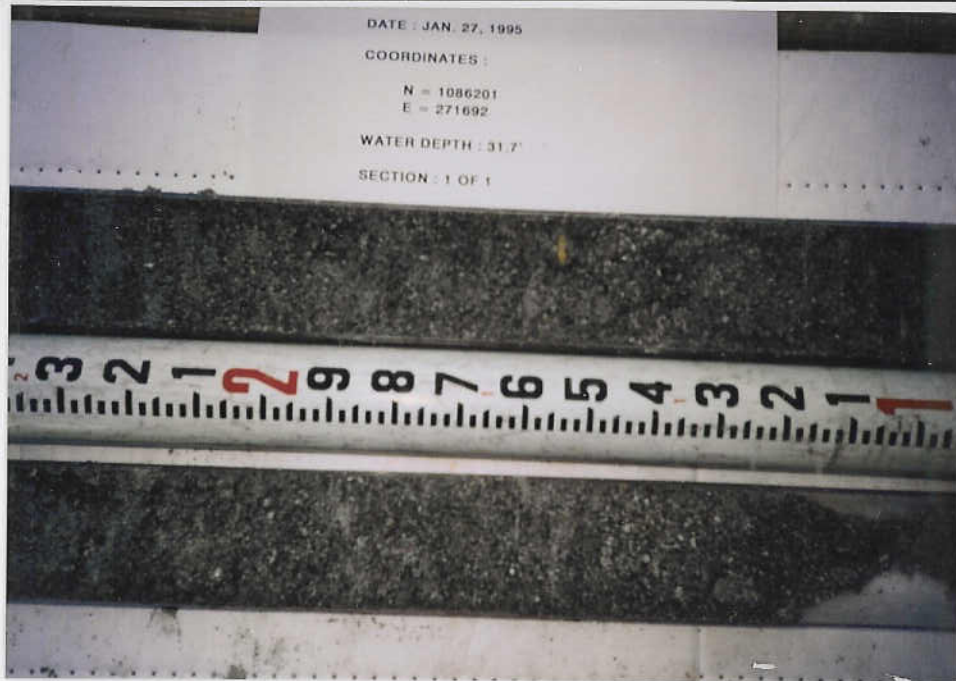
GRAIN SIZE DISTRIBUTION CURVE
LIDO KEY VIBRACORE JAN. 1995



WENTWORTH CLASSIFICATION

PEBBLE	GRAVEL	SAND			SILT	CLAY
		COARSE	MED.	FINE		

SAMPLE NO.	SAMPLE ELEV.	SAMPLE DEPTH	USCS CLASS.	MEAN SIZE (mm)	MEDIAN SIZE (mm)	SORTING
LKVC-13 S20	-36.0	-4.0	SP-SM	0.19	0.16	0.98



LKVC-13A

