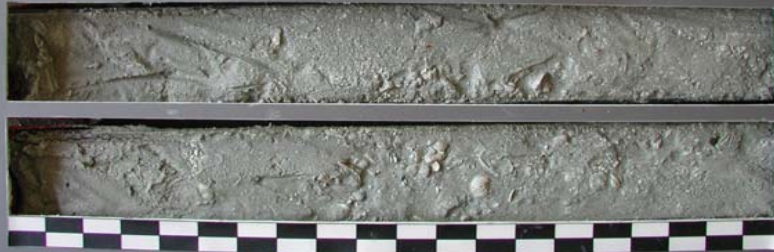


COLLIER COUNTY  
CCVC-03-25  
0.0' - 2.0'



COASTAL PLANNING & ENGINEERING, INC.

COLLIER COUNTY  
CCVC-03-25  
2.0' - 4.0'



COASTAL PLANNING & ENGINEERING, INC.

COLLIER COUNTY  
CCVC-03-25  
4.0' - 6.0'



COASTAL PLANNING & ENGINEERING, INC.

COLLIER COUNTY  
CCVC-03-25  
6.0' - 8.0'



COASTAL PLANNING & ENGINEERING, INC.

COLLIER COUNTY  
CCVC-03-25  
8.0' - 10.0'



COASTAL PLANNING & ENGINEERING, INC.

COLLIER COUNTY  
CCVC-03-25  
10.0' - 11.8'



COASTAL PLANNING & ENGINEERING, INC.