

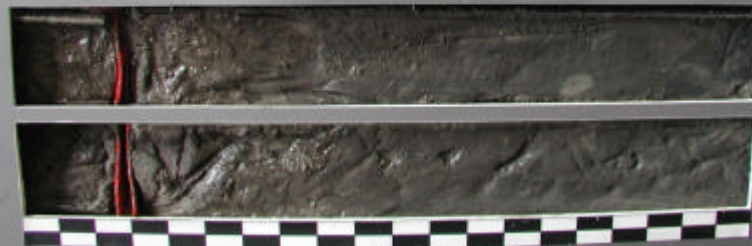


COLLIER COUNTY
CCVC-03-08
8.0' - 10.0'



COASTAL PLANNING & ENGINEERING, INC.

COLLIER COUNTY
CCVC-03-08
10.0' - 12.0'



COASTAL PLANNING & ENGINEERING, INC.

COLLIER COUNTY
CCVC-03-08
12.0' - 12.7'



COASTAL PLANNING & ENGINEERING, INC.

