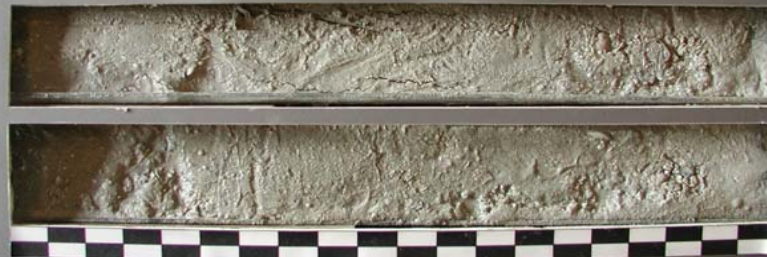


COLLIER COUNTY  
CCVC-03-29  
0.0' - 2.0'



COASTAL PLANNING & ENGINEERING, INC.

COLLIER COUNTY  
CCVC-03-29  
2.0' - 4.0'



COASTAL PLANNING & ENGINEERING, INC.

COLLIER COUNTY  
CCVC-03-29  
4.0' - 4.6'



COASTAL PLANNING & ENGINEERING, INC.