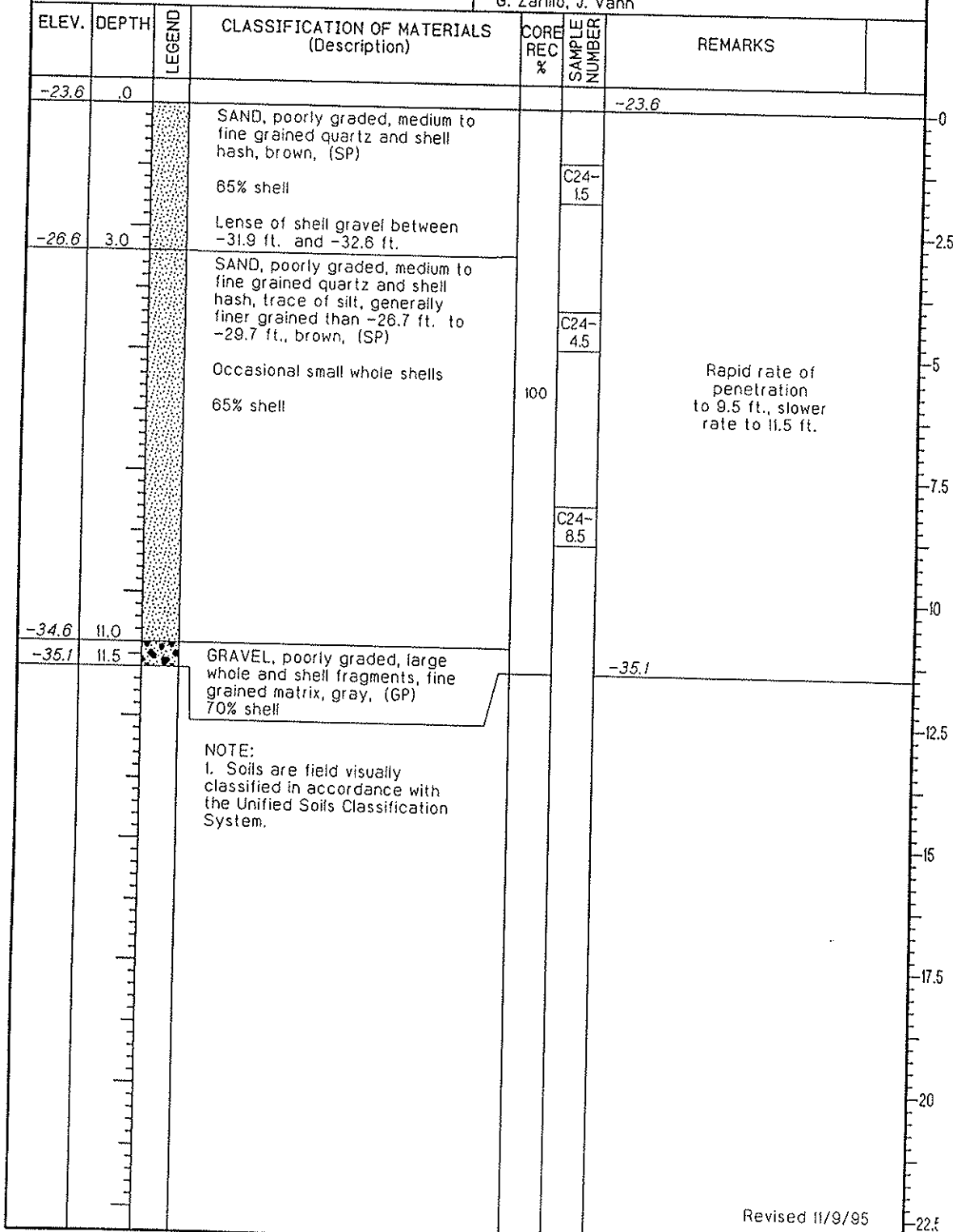


<b>DRILLING LOG</b>		DIVISION South Atlantic	INSTALLATION Jacksonville District	SHEET 1 OF 1
1. PROJECT Ft. Pierce, FL, Shore Protection Project		10. SIZE AND TYPE OF BIT 2-1/2" Vibracore		
2. LOCATION (Coordinates or Station) X=1128,615 Y=751,449		11. DATUM FOR ELEVATION SHOWN (TBM or HSL) Mean Low Water, -1.2' NGVD		
3. DRILLING AGENCY EXMAR		12. MANUFACTURER'S DESIGNATION OF DRILL Vibracore		
4. HOLE NO. (As shown on drawing title and file number) CB-STL-C24		13. TOTAL NO. OF OVERBURDEN SAMPLES TAKEN disturbed: 0 undisturbed: 0		
5. NAME OF DRILLER M. Clarke		14. TOTAL NUMBER OF CORE BOXES		
6. DIRECTION OF HOLE <input checked="" type="checkbox"/> VERTICAL <input type="checkbox"/> INCLINED		15. ELEVATION GROUND WATER		
7. THICKNESS OF BURDEN 0 Ft.		16. DATE HOLE STARTED COMPLETED 7/12/95 7/12/95		
8. DEPTH DRILLED INTO ROCK 0 Ft.		17. ELEVATION TOP OF HOLE -23.6 Ft.		
9. TOTAL DEPTH OF HOLE 11.0 Ft.		18. TOTAL CORE RECOVERY FOR BORING 100 %		
		19. SIGNATURE OF GEOLOGIST G. Zarillo, J. Vann		



Revised 11/9/95