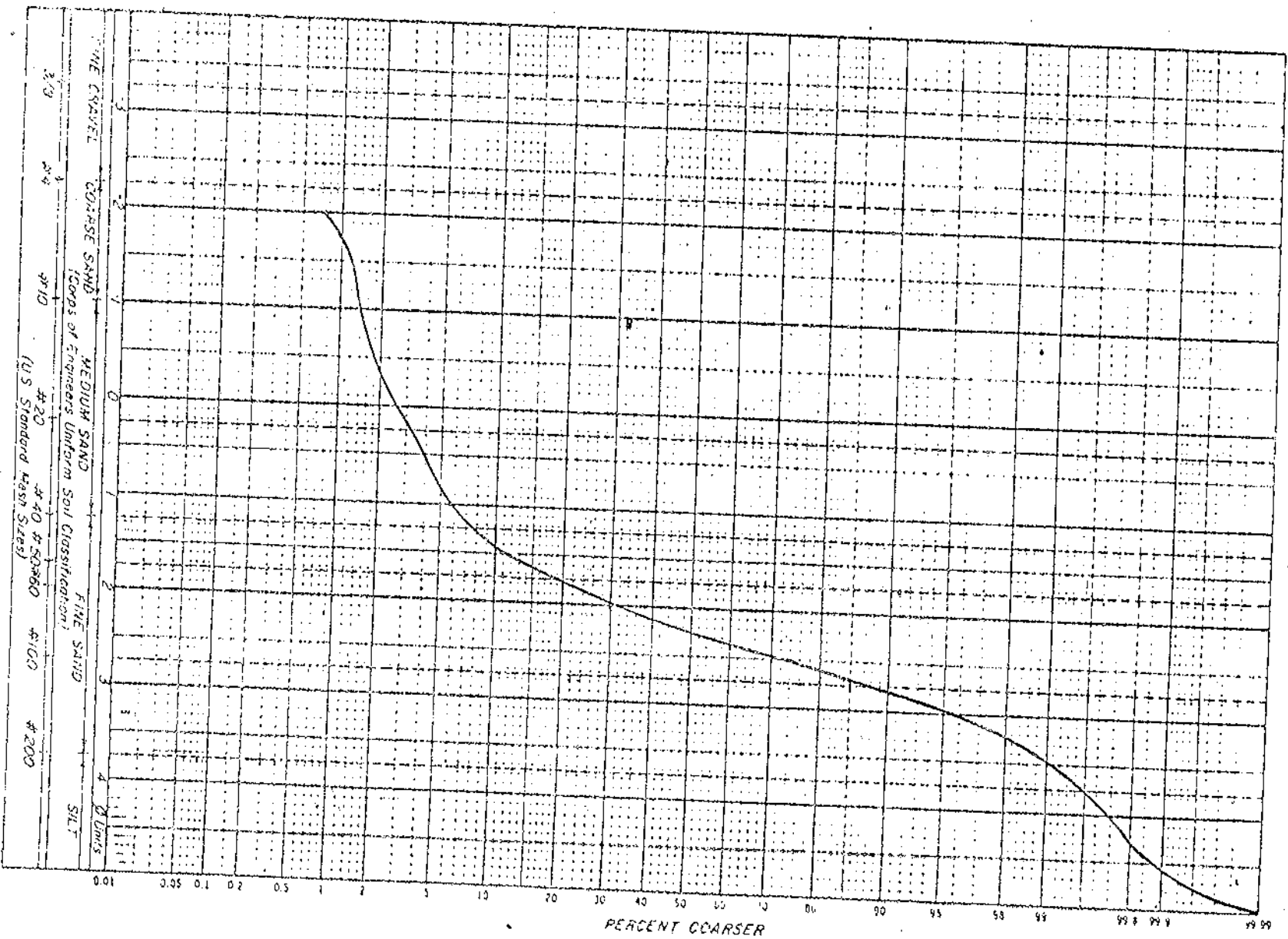


CORE A-4#2
(0-220 cm)



CORE A-4 #2
(220-507 cm)

A-4 #2
(220-507)

CUMULATIVE
SIEVE FRACTIONS (WEIGHT PERCENTS)

		Greater Than													les tha +4.
Sample Ø	-2.0	-1.5	-1.0	-0.5	0.0	+0.5	+1.0	+1.5	+2.0	+2.5	+3.0	+3.5	+4.0		
#	mm	4.0	2.8	2.0	1.4	1.0	0.710	0.500	0.355	0.250	0.170	0.125	0.090	0.063	0.0
A 21- 26	--	--	0.04	0.20	0.47	1.51	3.70	8.23	14.91	32.29	73.20	96.14	99.26	99.44	100.
A109-114	1.44	2.37	3.56	5.54	9.18	16.09	30.53	49.37	73.02	90.84	97.86	99.04	99.18	100.	
A184-189	0.13	0.13	0.16	0.29	0.82	2.82	11.65	30.27	59.99	87.47	97.43	99.32	99.47	100.	
A267-272	--	0.08	0.18	0.33	0.71	1.55	3.88	8.09	16.44	40.19	77.26	89.75	90.03	100.	
B 14- 19	0.07	0.36	1.02	1.79	3.10	6.27	13.98	25.89	51.32	80.13	93.00	96.55	97.32	100.	
B 46-51	3.13	5.24	6.91	8.92	11.68	16.60	24.46	34.53	54.42	77.39	92.52	96.82	97.54	100.	
B102-107	9.13	9.45	10.06	10.53	11.68	14.13	20.41	31.50	52.50	81.81	94.18	96.92	97.22	100.	
B162-167	8.07	10.44	13.16	14.63	16.01	18.27	25.20	37.67	60.60	82.45	92.60	95.49	95.85	100.	
B216-221	--	--	0.01	0.37	1.04	2.73	5.81	9.12	16.56	39.91	78.82	91.85	92.09	100.	
C 11- 16	0.91	2.34	3.50	5.00	7.48	12.27	23.26	38.14	58.73	81.12	91.88	94.81	95.82	100.	
C 54- 59	11.56	12.58	14.08	15.92	18.86	24.17	35.67	50.26	70.07	87.93	95.66	97.31	97.60	100.	
C102-107	2.26	3.88	5.00	5.92	7.55	11.15	21.62	38.02	69.22	88.47	96.08	97.61	97.77	100.	
C133-138	0.13	0.16	0.20	0.29	0.67	2.52	11.04	27.66	54.87	83.66	96.08	98.61	98.81	100.	
C199-204	--	--	0.04	0.13	0.64	2.18	5.79	10.75	37.96	77.20	93.57	95.95	96.03	100.	
E 30-35	--	0.32	1.02	2.40	5.53	11.10	20.47	32.41	61.89	91.55	98.96	99.94	99.98	100.	
E103-108	13.16	16.96	19.82	22.00	24.65	28.18	36.62	50.09	68.20	83.58	91.06	93.25	93.57	100.	
E167-172	--	--	--	0.15	0.71	2.72	8.99	20.39	44.21	78.70	93.43	96.03	96.15	100.	
E215-220	--	--	0.05	0.10	0.67	3.34	13.95	31.71	62.12	88.95	97.44	99.13	99.27	100.	